



**32.0M Twin Screw Vessel  
2 x 1600BHP Cummins**

**PRINCIPAL PARTICULARS**

Length Overall : 32.00M  
Length BP : TBA  
Breadth Moulded : 9.144M  
Depth Moulded : 4.20M  
Draft Moulded : 3.50M  
Class Notation : GL + Unrestricted services  
Gross Tonnage : TBA  
Speed : 11.0 knots (approx)

**TANKAGE**

Fuel oil : 220 tons (approx)  
Fresh water : 32 tons (approx)  
Ballast water : 24 tons (approx)

**MACHINERY**

Main engine : 2 x Cummins KTA 50M2, 1600 BHP / 1800 RPM  
Reduction gear : Reintjes WAF665, 5.950:1  
Propeller : 2 x 4 bladed manganese bronze  
Main generator : 2 x 80KW Cummins

**ACCOMMODATION**

For 14 men with 2 cabins for Captain and Chief Engineer, 6 x two-man cabin

**FIRE FIGHTING EQUIPMENT**

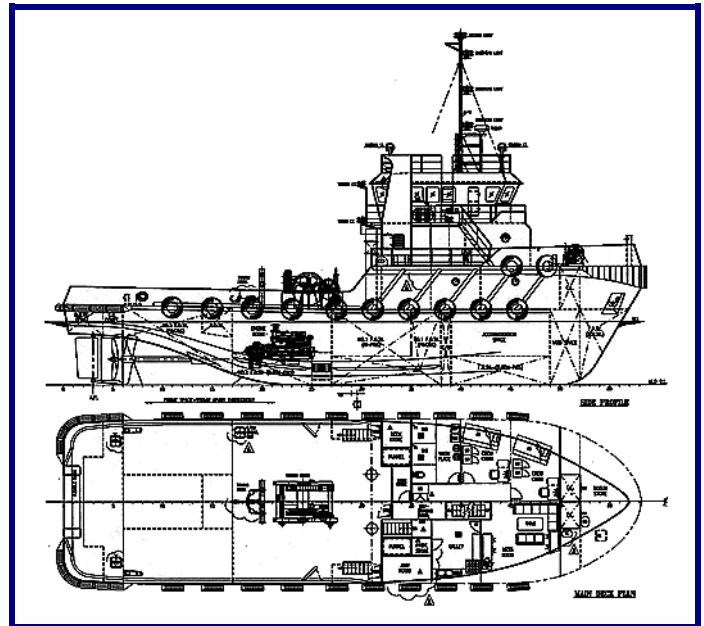
- Fire Extinguisher is provided
- A complete fireman's outfit is to be provided

**DECK MACHINERY**

- Anchor windlass : 1 x Hydraulic Anchor Winch 22mm
- Anchor : 2 x stockless bower anchors each of 570kg
- Towing winch : 1 x 40 tons single drum. Drum capacity 800m x 42mm wire (wire rope to be supplied by buyer)
- Towing hook: 1 x 40 tons

**NAVIGATION EQUIPMENT**

- For A2
- 1 set SSB radiotelephone
- 1 set VHF/FM radio
- 1 set Navtex Receiver
- 1 set GPS navigator
- 1 set Sart
- 1 set EPIRB
- 1 set echo sounder
- 1 set radar range 24NM



Picture of sistership updated on 13.11.08

**LIFE SAVING EQUIPMENT**

- 2 x 15 men liferafts
- 8 sets Life buoy
- 18 sets lifejackets
- 1 set first aid kit

**PUMPS**

- F.O. pump : 1 x 9.8M<sup>3</sup>/hr @ 25m head
- F.W. pump : 2
- Fire pump : 1
- Bilge pump : 1
- Sewage treatment system : for 15 men
- Oily bilge water separator : 1 x 0.5M<sup>3</sup>/hr

Contents herein are believed correct but not guaranteed.