



SAIL FORTH, GROW BEYOND

COASTAL OFFSHORE (LABUAN) PTE. LTD. (LL02556)

A WHOLLY OWNED SUBSIDIARY OF COASTAL CONTRACTS BHD

230FT x 60FT x 18FT Oil Barge – ± 3277.5MT



Picture may be of different unit and is for demonstration purpose only.

DESCRIPTION

This double hull and double bottom oil barge is designed for carrying base oil and finished oil which flashpoint is below 60°C.

PRINCIPAL PARTICULARS

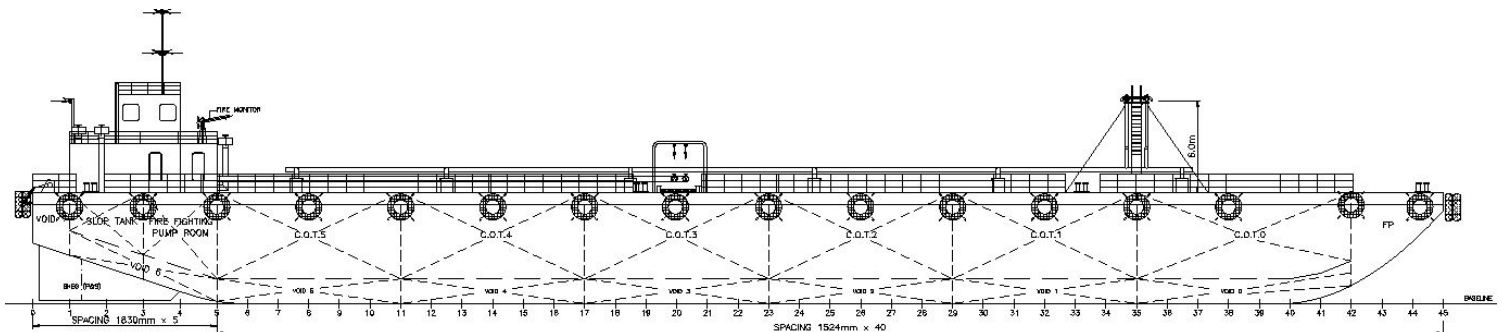
Length overall	: 230ft (70.104M)
Length bp	: 67.30M
Breadth moulded	: 60ft (18.290M)
Depth moulded	: 18ft (5.490M)
Draft moulded	: 3.63M
Gross tonnage	: 1834 t
Net tonnage	: 807 t
Lightship weight	: 970.19MT
Displacement	: 4247.55MT at summer draft
Tank capacity	: ±3277.50MT
Hull material	: Steel
Class notation	: BV I * Hull • Mach Barge - Oil, Unrestricted Navigation

TANKAGE

Cargo tank	:	± 3750 M ³
Fuel oil	:	± 8 M ³
Dirty oil tank	:	± 16 M ³
Fresh water	:	± 21 M ³
Sewage	:	± 16 M ³

MACHINERY, EQUIPMENT & PIPING

Cargo fuel pump	:	2 x 2GC/BL350 Q=350 M ³ /hr, P = 0.8Mpa, 1500rpm
Diesel engine	:	2 x for starting cargo fuel pump, 6135AZcaf, w=190KW/220hp, n=1500rpm
Reduction gear box	:	2 x 135 r = 1:1
Generator	:	2 x 24kw Daewoo, 415V/50Hz/3ph
General pump	:	1 x 22 m ³ /hr×26m/h
Fire pump	:	1 x 22 m ³ /hr×26m/h
Oily dirty water separator	:	0.5m ³ /hr
Hall's anchor	:	1 x 900kg, wire cable Φ28 x 200M



For more information, please contact Coastal Marketing Team at

Block G, Lot 3B, Bandar Leila, W.D.T 259, 90009 Sandakan, Sabah, Malaysia

T: +6089 616263 | F: +6089 616654 | E: marketing@coastalcontracts.com

www.coastalcontracts.com

