



**230FT x 60FT x 14FT Dumb Barge**  
 Deck strength : 5 tonnes / M<sup>2</sup>

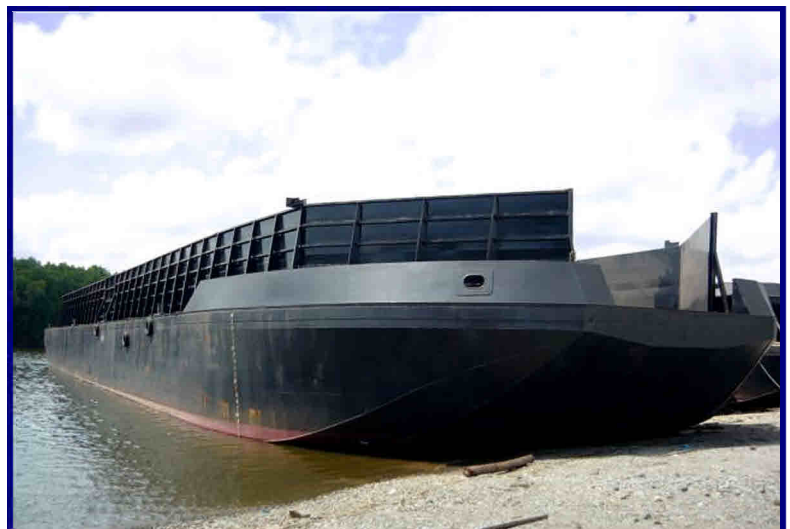
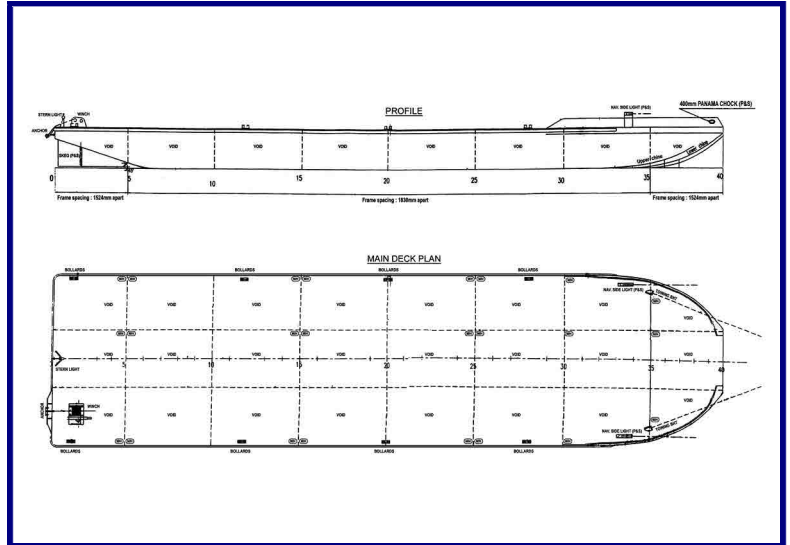
This unmanned steel dumb barge is suitably equipped for carrying deck cargo for unrestricted services.

**PRINCIPAL PARTICULARS**

Length Overall	.....	230ft (70.10M)
Length BP	.....	67.33M
Breadth Moulded	.....	60ft (18.30M)
Depth Moulded	.....	14ft (4.27M)
Draft Moulded	.....	3.44M
Class	.....	BV
Notation.....	.....	I*HULL
Pontoon Unrestricted Navigation		
Deadweight	.....	±3,300 MT
Gross Tonnage	.....	1352 MT
Nett Tonnage	.....	405 MT
Deck Strength	.....	5 tonnes / M <sup>2</sup>
Open Deck Area	.....	900 M <sup>2</sup>

**PLATING**

Deck Plate	.....	12mm
Bottom Plate	.....	10mm
Side Plate	.....	9mm
Bulkhead Plate	.....	8mm
Chine Bar	.....	38mm dia
Bollard	.....	8 units
Side board height	.....	10'
Ramp door size	.....	16' x 28'
Deck Longitudinal Angle Bar :	125mm x 80mm x 7mm	
Bottom Longitudinal Angle Bar :	125mm x 80mm x 7mm	
Side Longitudinal Angle Bar :	125mm x 75mm x 7mm	
Stanchion :	150mm x 150mm x 12mm	
Diagonal :	130mm x 130mm x 12mm	



Contents herein are believed correct but not guaranteed and are subject to alteration without notification.