

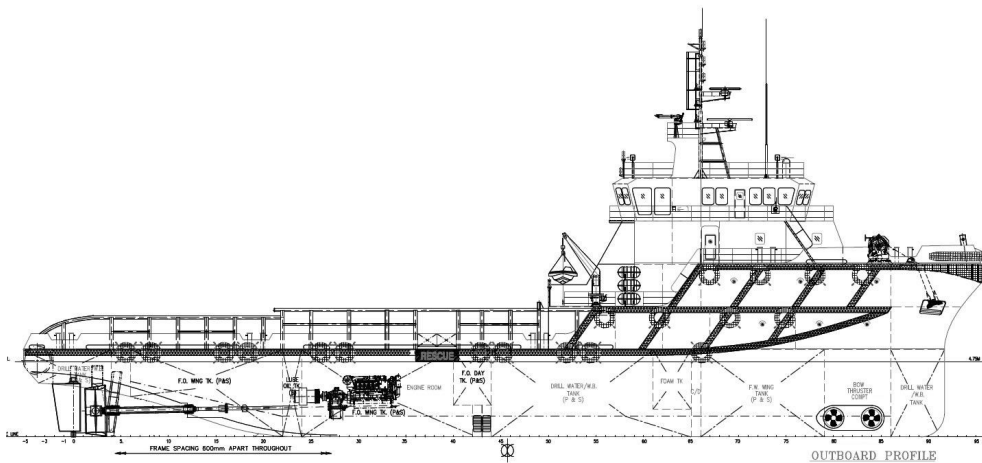


COASTAL OFFSHORE (LABUAN) PTE. LTD. (LL02556)

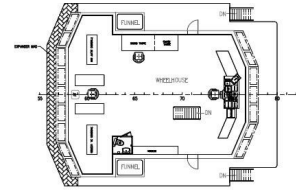
A WHOLLY OWNED SUBSIDIARY OF COASTAL CONTRACTS BHD

SAIL FORTH, GROW BEYOND

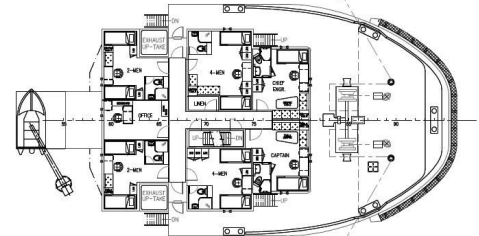
60.5M 5150BHP DP-1 Anchor Handling Supply Vessel



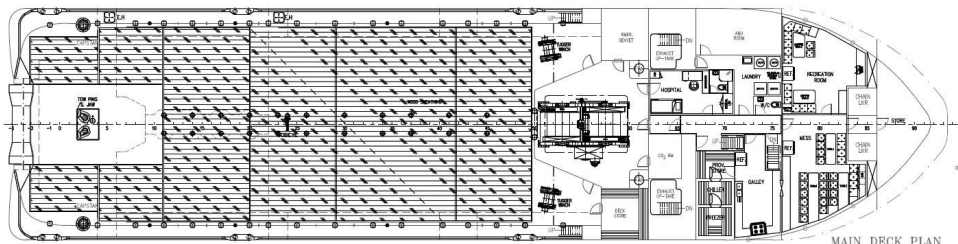
OUTBOARD PROFILE



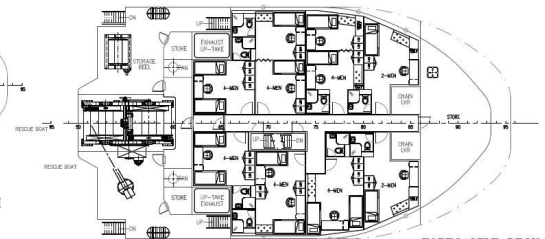
NAV. BRIDGE DECK



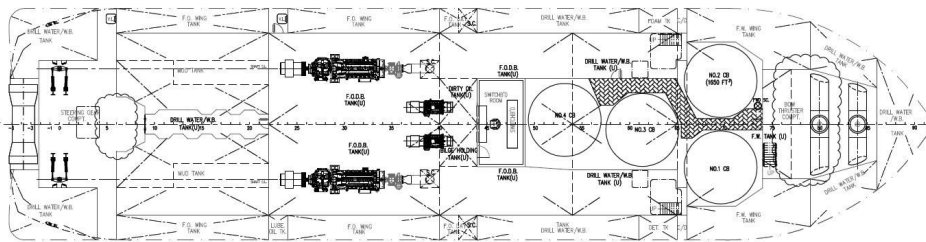
UPPER FORECASTLE DECK



MAIN DECK PLAN



FORECASTLE DECK



BELOW MAIN DECK PLAN

PRINCIPAL PARTICULARS

Length Overall	: 60.50M
Length BP	: 55.00M
Breadth Moulded	: 14.60M
Depth Moulded	: 5.50M
Draft Moulded	: 4.50M
Deadweight @ 4.5M draft	: 1400 t (approx)
Gross Tonnage	: 1500 t (approx)
Bollard pull (@ 100% MCR)	: 60 t (approx)
Trial speed	: 13.5 knots (approx)
Class Notation	: BV1 + HULL+ MACH "SUPPLY VESSEL & FIRE FIGHTING CLASS 1, + DYNAPOS AM/AT", + DPS-1

MACHINERY/PROPULSION

Main engine	: 2 x 2575bhp @ Caterpillar 3516B
Reduction gear	: 2 x Reinjtes LAF873, 7.526:1
Propeller	: 2 x controllable pitch type
Bow thruster	: 2 x 8.0T controllable pitch type
Main generator	: 2 x 450kW diesel driven, Caterpillar C18
Shaft generator	: 2 x 900kW shaft driven, 415V/3pH/50Hz
Emergency diesel generator	: 1 x 65kW Caterpillar C4.4

CARGO CAPACITY

Clear deck area	:	370M ²
Deck loading	:	7.0 t/M ²
Fuel oil	:	520M ³
Fresh water	:	213M ³
Drill water/ water ballast	:	460M ³
Mud	:	260M ³
Dry bulk (4 x 1650 ft ³)	:	187M ³

DISCHARGE RATES

Fuel oil	:	1 x 150M ³ /hr @ 75M head
Fresh water	:	1 x 100M ³ /hr @ 75M head
Drill water	:	1 x 100M ³ /hr @ 75M head
Mud	:	2 x 70M ³ /hr @ 75M head
Cement compressor	:	2 x 13M ³ /min @ 80psi

SUPPLY & DRAINAGE PLANT

Freshwater hydrophore plant	:	1 x 2M ³ /hr @ 35M head
Seawater hydrophore plant	:	1 x 2M ³ /hr @ 35M head
Freshwater maker	:	1 x reverse osmosis type of 5 t/day
Sewage holding & treatment system	:	for 42 persons
Oily bilge water separator	:	1 x 1.0M ³ /hr with oil content less than 15 ppm
Central water heating system	:	1 set c/w 300L tank

EXTERNAL FIRE FIGHTING SYSTEM

External FiFi-1 c/w water spray
Fire monitor 2 x 1200M³/hr @ 12 bar
Fire pumps 2 x 1500M³/hr @ 13 bar
Foam tank capacity 13M³
Dispersant tank capacity 13M³
2 x independent sea chest

INTERNAL FIRE FIGHTING SYSTEM

Emergency fire pumps
CO₂ system in engine room
Fire/smoke detection and alarm system
Firemain
Fireman's outfits
Portable fire extinguishers

DYNAMIC POSITIONING SYSTEM

Meets the DPS-1 class notation of BV, to be configured or incorporated with:

- 2 x position reference systems (DGPS)
- 2 x wind sensors
- 2 x motion reference systems
- 2 x gyro compasses
- 1 x UPS
- 1 x control station with two computer systems of Joystick and DP System

NAVIGATION EQUIPMENT

X-band radar range 64NM	:	1 set
X-band radar range 96NM	:	1 set
Echo sounder	:	1 set
DGPS	:	1 set
Gyro compass	:	1 set
Magnetic compass	:	1 set
Autopilot	:	1 set
Weather facsimile receiver	:	1 set
Doppler speed log	:	1 set
AIS	:	1 set
MF/HF Transceiver (GMDSS)	:	1 set
Satellite EPIRB (GMDSS)	:	1 set
2-way portable VHF radios (GMDSS)	:	3 sets
SART	:	2 sets
Navtex Receiver (GMDSS)	:	1 set

ACCOMMODATION

2 x 1 man cabin	:	2 men
4 x 2 men cabin	:	8 men
8 x 4 men cabin	:	32 men
Total	:	42 men
1 x hospital	:	1 man
Cooler + freezer	:	≥ 250 L
Provision store	:	15 days

DECK/AHL EQUIPMENT

Windlass	:	1 x electro hydraulic type of 9 t @ 12M/min for 40mm dia. chain
Capstan	:	2 x electro hydraulic type of 5 t @ 15M/min
Anchor	:	2 x high-hold type, stowed in anchor-pockets each of 1305kg
Towing & anchor handling winch	:	1 x hydraulic driven, double drum, waterfall type, c/w spooling device for the towing drum (only) (wire not provided) Drum pull : 150 MT (1 st layer) Brake holding : 200 MT Drum capacity : (upper - towing) 1000M x 56mm dia. wire rope; (lower – anchor handling) 1000M x 56mm dia. wire rope
Towing pins	:	2 x vertical hydraulic retractable type @ approx. 200 t
Shark jaws	:	1 x hydraulic retractable type @ S.W.L. 200 t
Tugger winch	:	2 x electro-hydraulic type of 10 t @ 15M/min
Deck crane	:	1 x marine crane of 3 t S.W.L. @ 9.0M
Stern roller	:	5.0M long by 1.6M dia., S.W.L. 200 t
Storage reel	:	1 x hydraulic type of 5 t @ 15M/Min with drum capacity of 56mm dia. x 1000M (wire not provided)

LIFE SAVING EQUIPMENT

Life raft	:	4 x 20 men, 2 x 25 men
Life buoy-ring	:	8 sets
Lifejackets	:	53 sets
First aid kit	:	1 set
FRP rescue boat c/w davit	:	1 set
Immersion suits	:	3 sets
EEBD	:	6 + 1 sets

For more information, please contact Coastal Marketing Team at
Block G, Lot 3B, Bandar Leila, W.D.T 259, 90009 Sandakan, Sabah, Malaysia
T: +6089 616263 | F: +6089 616654 | E: marketing@coastalcontracts.com

www.coastalcontracts.com