



SAIL FORTH, GROW BEYOND

# THAUMAS MARINE LTD. (BC No. 1397697)

A WHOLLY OWNED SUBSIDIARY OF COASTAL CONTRACTS BHD

## 47M 4400BHP Anchor Handling Vessel



Picture is of different vessel and is for demonstration purpose only.

### PRINCIPAL PARTICULARS

Length overall	: 47.00M
Length waterline	: 45.43M
Length BP	: 41.40M
Beam moulded	: 12.80M
Depth moulded	: 4.85M
Draft designed	: 4.00M
Deadweight	: 750T
Gross tonnage	: 828
Net tonnage	: 248
Hull material	: Steel
Bollard pull	: 50 t (approx)
Trial speed	: 12.0 knots
Endurance	: 25 days
Class notation	: BV Class + Hull + Mach "Anchor Handling Tug", Unrestricted Navigation

### MACHINERY/PROPULSION

Main engine	: 2 x 2200bhp @ 1800RPM Cummins QSK 60
Reduction gear	: 2 x Twin Disc MGN1727V, 7.5:1
Propeller	: 2 x fixed pitch type with nozzles
Bow thruster	: 1 x FPP type of approx. 5 t thrust
Main generator	: 3 x 245kW Cummins QSM 11 DM, 415V/3pH/50Hz
Emergency diesel generator	: 1 x 65kW, 50Hz, 0.8PF Cummins

### LIFE SAVING EQUIPMENT

Life raft	: 4 sets x 20 men
Life buoy-ring	: 8 sets
Lifejackets	: 30 sets
Rescue boat c/w davit crane	: 1 set x 6 men
First aid kit	: for 26 men

### CARGO CAPACITY

Deck cargo	:	210 t
Clear deck area	:	180M <sup>2</sup>
Deck loading	:	5t/M <sup>2</sup>
Fuel oil	:	590M <sup>3</sup>
Fresh water	:	190M <sup>3</sup>
Sea water ballast	:	136M <sup>3</sup>

### DISCHARGE RATES

Fuel oil	:	70M <sup>3</sup> /hr @ 50M head
Fresh water	:	50M <sup>3</sup> /hr @ 50M head
Bilge & ballast	:	50M <sup>3</sup> /hr @ 35M head

### SUPPLY & DRAINAGE PLANT

Freshwater pressure set	:	1 x 3M <sup>3</sup> /hr @ 35M head
Seawater pressure set	:	1 x 3M <sup>3</sup> /hr @ 35M head
Sewage holding & treatment system	:	for 30 men
Oily bilge water separator	:	1 x 0.5M <sup>3</sup> /hr with oil content less than 15 ppm

### FIRE FIGHTING SYSTEM

External: FiFi-1/2  
 Fire monitor 2 x 600M<sup>3</sup>/hr @ 11 bar  
 Fire pumps 1 x 1200M<sup>3</sup>/hr @ 11 bar  
 Foam capacity 9.6M<sup>3</sup>  
 Dispersant capacity 9.6M<sup>3</sup>  
 1 x independent sea chest

Internal  
 Emergency fire pump of 25M<sup>3</sup>/hr @ 30M head  
 Fixed CO<sub>2</sub> system in engine room  
 Fire/smoke detection and alarm system

## ACCOMMODATION

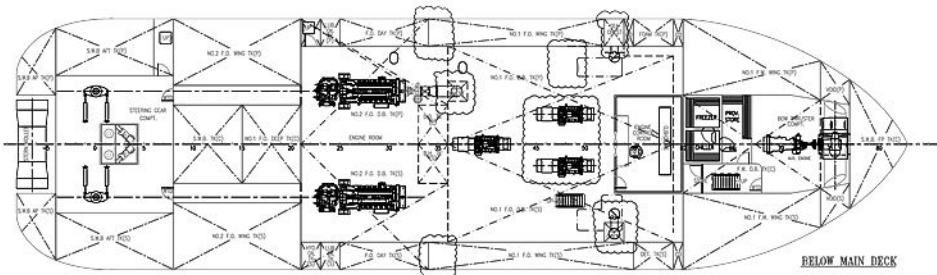
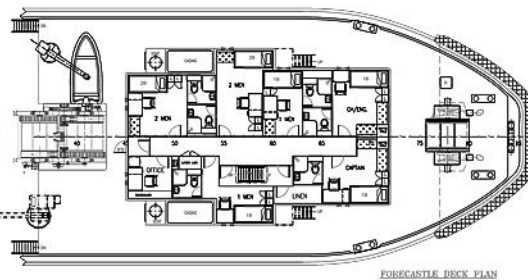
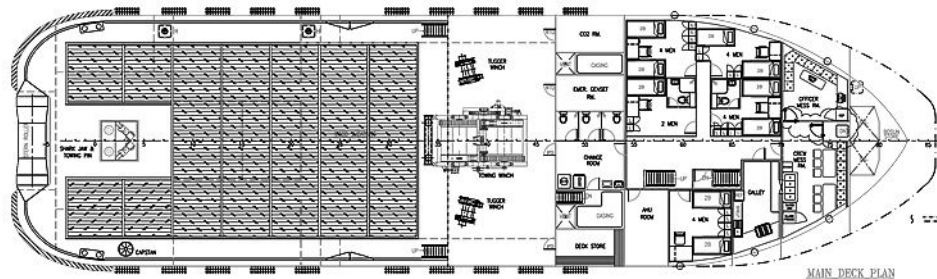
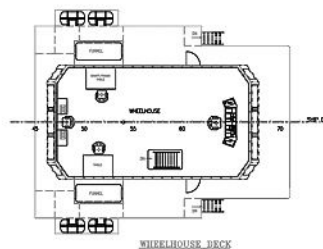
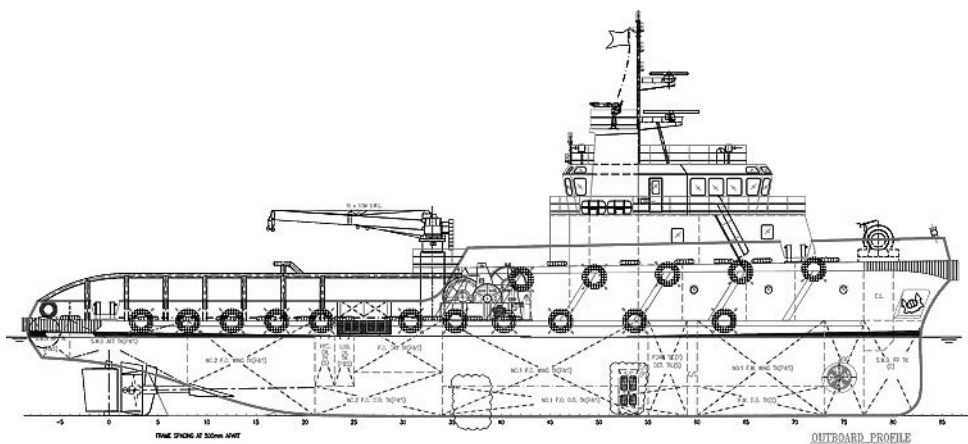
4 x 1 man cabin	:	4 men
3 x 2 men cabin	:	6 men
4 x 4 men cabin	:	16 men
Total	:	26 men

## NAVIGATION EQUIPMENT

Radar range 96NM + 48NM	:	1 + 1 set
Eco sounder	:	1 set
GPS	:	1 set
Autopilot + gyro compass	:	1 + 1 set
Magnetic compass	:	1 set
Automatic identification system	:	1 set
Doppler speed log	:	1 set
GMDSS console	:	1 set
MF/HF	:	1 set
VHF	:	2 sets
Inmarsat C (GMDSS)	:	1 set
SSAS (GMDSS)	:	1 set
Navtex receiver (GMDSS)	:	1 set
EPIRB (GMDSS)	:	1 set
SART (GMDSS)	:	2 sets
Multi channel VHF GMDSS survival radio	:	3 sets
Anemometer	:	1 set

## DECK/AHL EQUIPMENT

Windlass	:	1 x electro hydraulic type of 4 t @ 12M/min for 28mm dia. stud link chain, double warping drums for mooring
Tugger winches / Capstan	:	2 x electro hydraulic type of 5 t @ 15M/min each
Anchor	:	2 x stockless bower type, stowed in anchor-pockets, 1020kg each
Towing & anchor handling winch	:	1 x hydraulic high pressure waterfall double drum type Line pull : 75 t (1 <sup>st</sup> layer, both drums) Brake type: Spring acted failsafe type hydraulic cylinder operated Brake holding : 150 t (1 <sup>st</sup> layer) Drum capacity : (AH) 52mm dia x 200M; (Towing) 52mm dia x 1000M
Shark jaws / Tow pin	:	1 set x hydraulic retractable type of S.W.L. 200 t
Provisional crane	:	1 x electro hydraulic marine type telescopic boom pedestal base of 2 t @ 10M lift
Stern roller	:	3.5M long by 1.6M dia, S.W.L. 180 t
Storage reel	:	1 x 10 t



For more information, please contact Coastal Marketing Team at

Block G, Lot 3B, Bandar Leila, W.D.T 259, 90009 Sandakan, Sabah, Malaysia  
 T: +6089 616263 | F: +6089 616654 | E: [marketing@coastalcontracts.com](mailto:marketing@coastalcontracts.com)

[www.coastalcontracts.com](http://www.coastalcontracts.com)