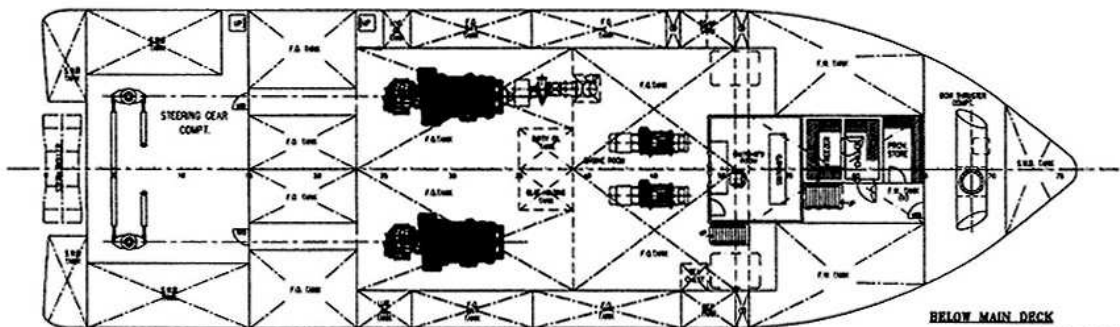
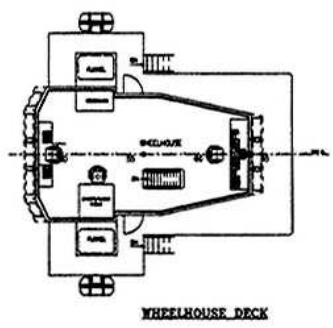
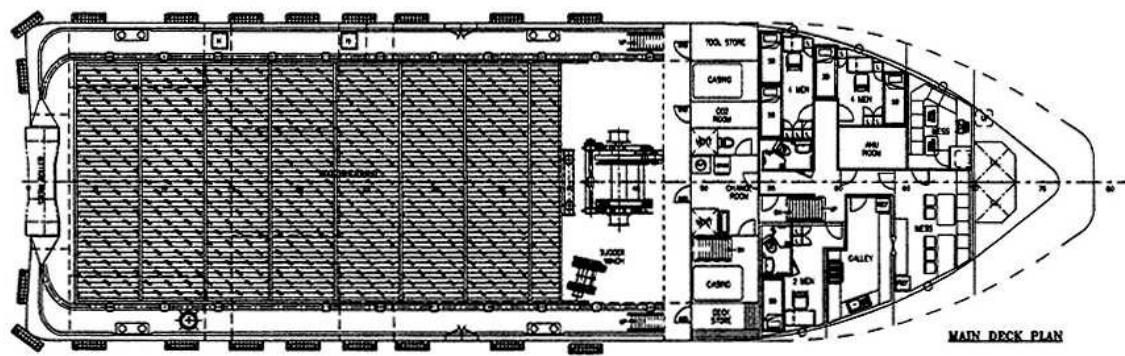
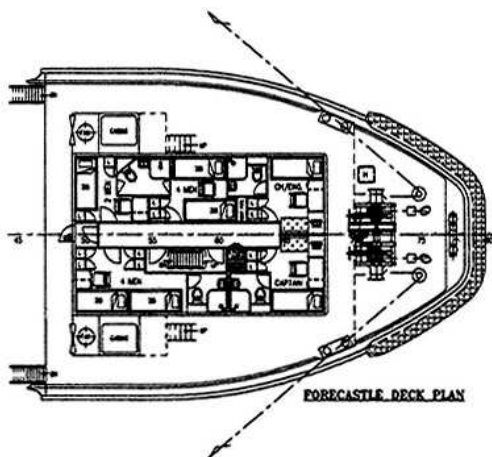
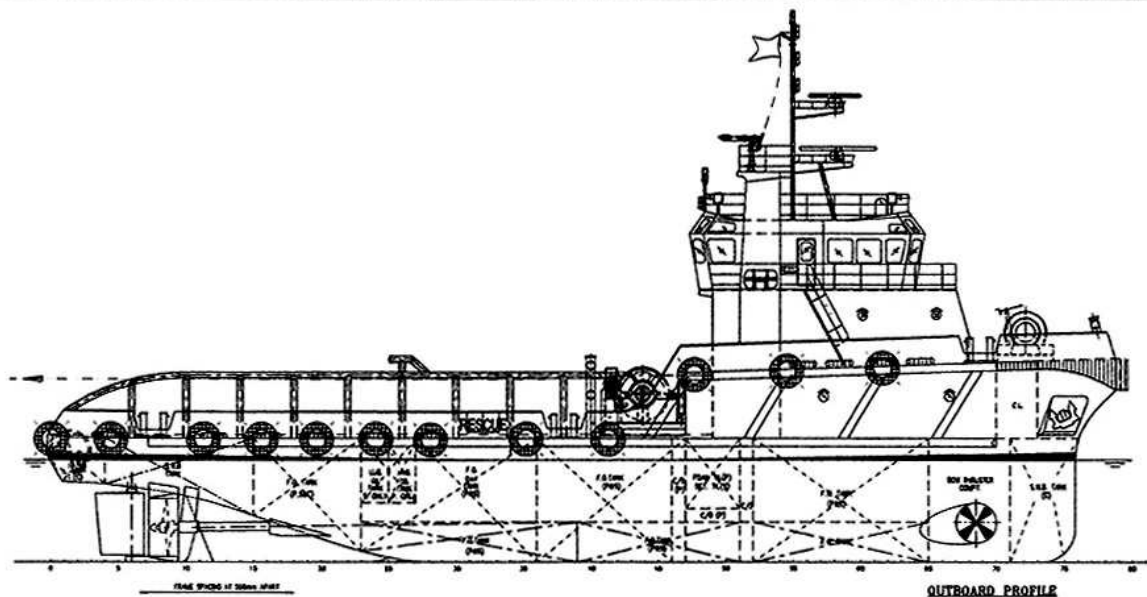


PRINCIPAL DIMENSIONS

LENGTH OVERALL	40.00 M
LENGTH MOULDED	39.50 M
LENGTH WATERLINE	37.80 M
LENGTH B.P.	34.90 M
BREADTH MOULDED	11.80 M
DEPTH MOULDED	4.60 M
DESIGN DRAFT MOULDED	3.80 M
COMPLEMENT	22 MEN
FUEL OIL	305.0 TONNES
FRESH WATER	170.0 TONNES
TOTAL POWER	2x1200 BHP
TRIAL SPEED	11.0 KNOTS
BOLLARD PULL (AHEAD)	28.0 TONNES



THIS DOCUMENT AND THE INFORMATION IT CONTAINS IS COPYRIGHT AND REMAINS THE PROPERTY OF ROMAN DANUBIUS MARINE PTE. LTD. IT IS NOT TO BE COPIED IN WHOLE OR IN PART OR DISCLOSED TO ANY THIRD PARTY FOR ANY PURPOSE WHATSOEVER WITHOUT PRIOR WRITTEN CONSENT.

REV		DETAILS OF MODIFICATION		BY	DATE
CORRECTIONS					
PROJECT					
40m UTILITY SUPPORT VESSEL					
TITLE					
GENERAL ARRANGEMENT					
CLASSIFICATION		HULL NO.			
DRAWN	CHECKED	SCALE	DRAWING NUMBER	REV.	
03-07-07		1:100			