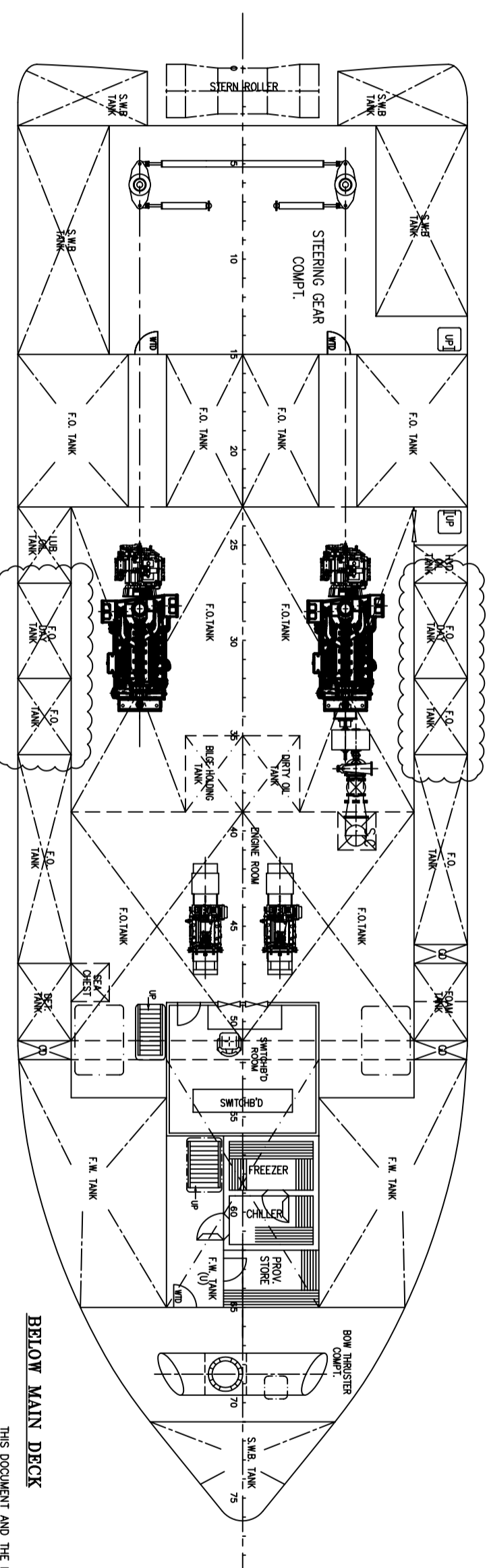
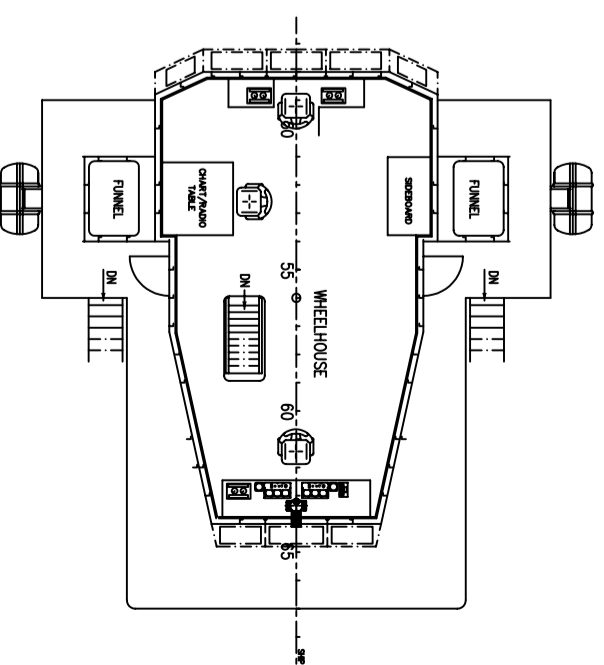
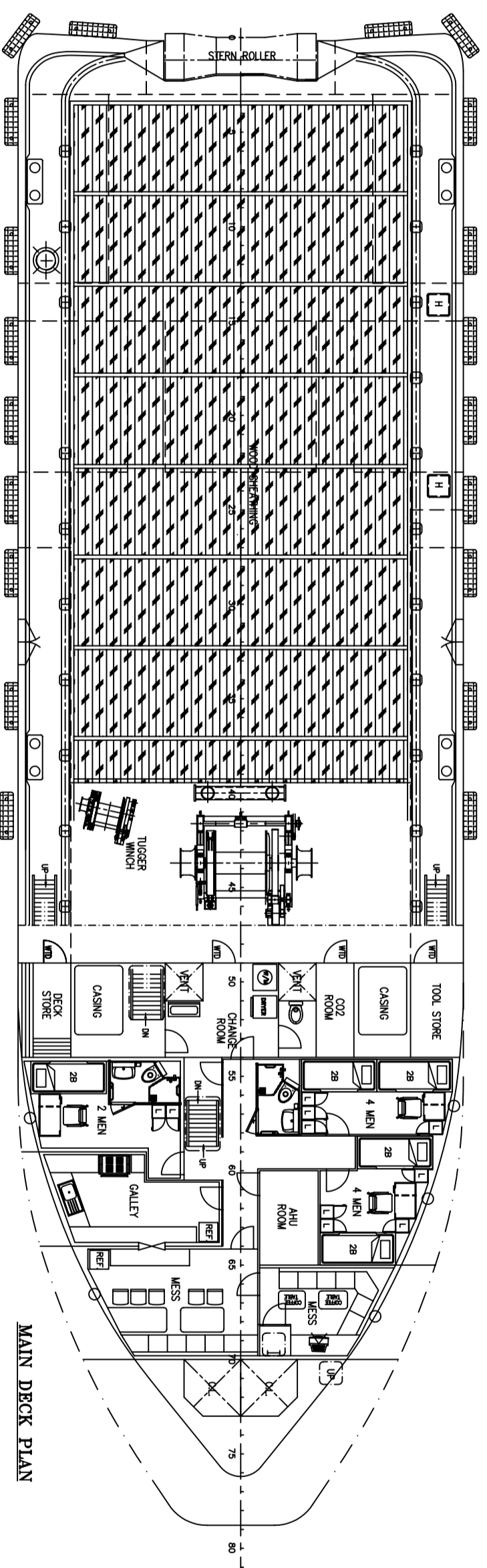
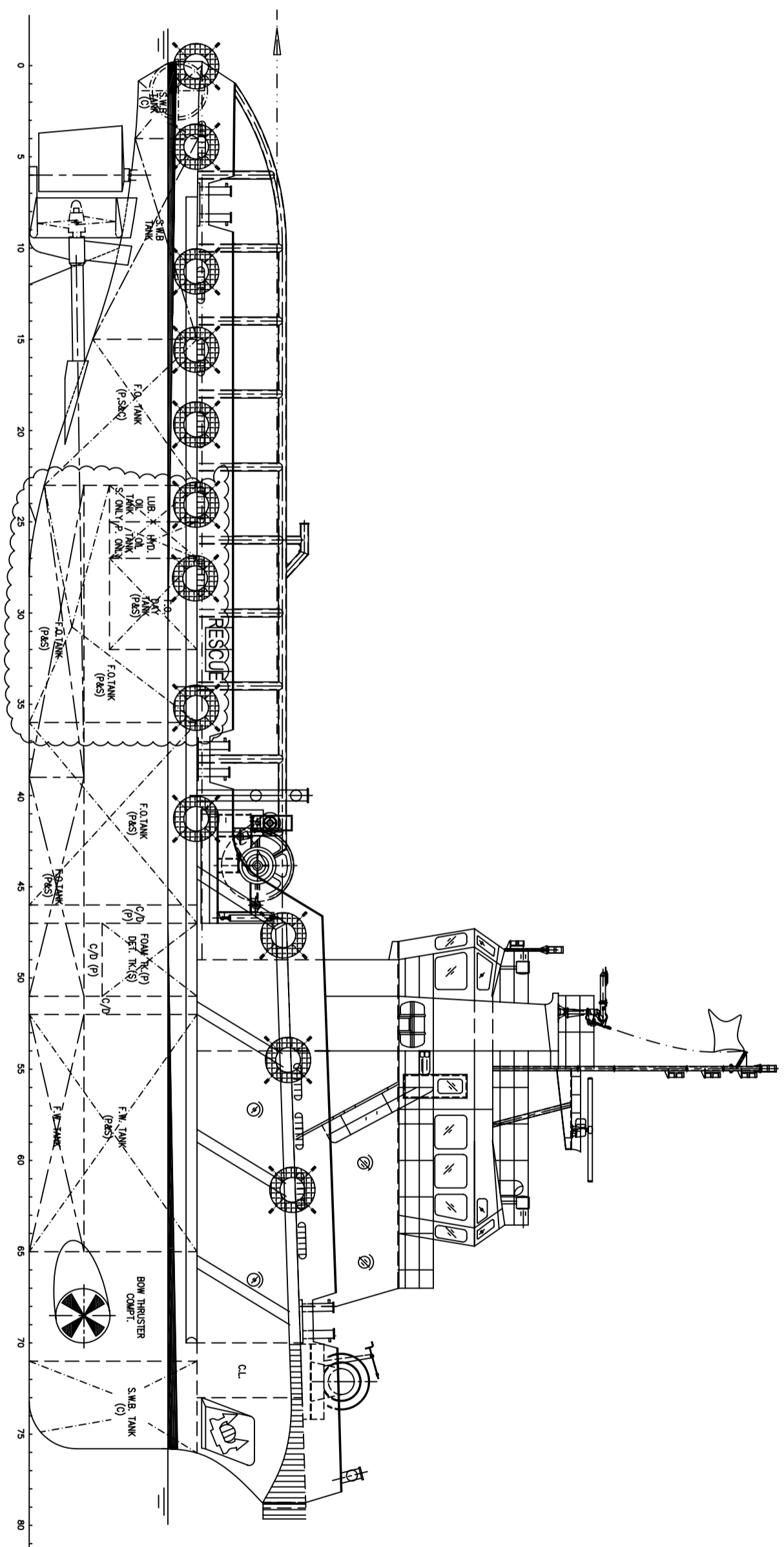
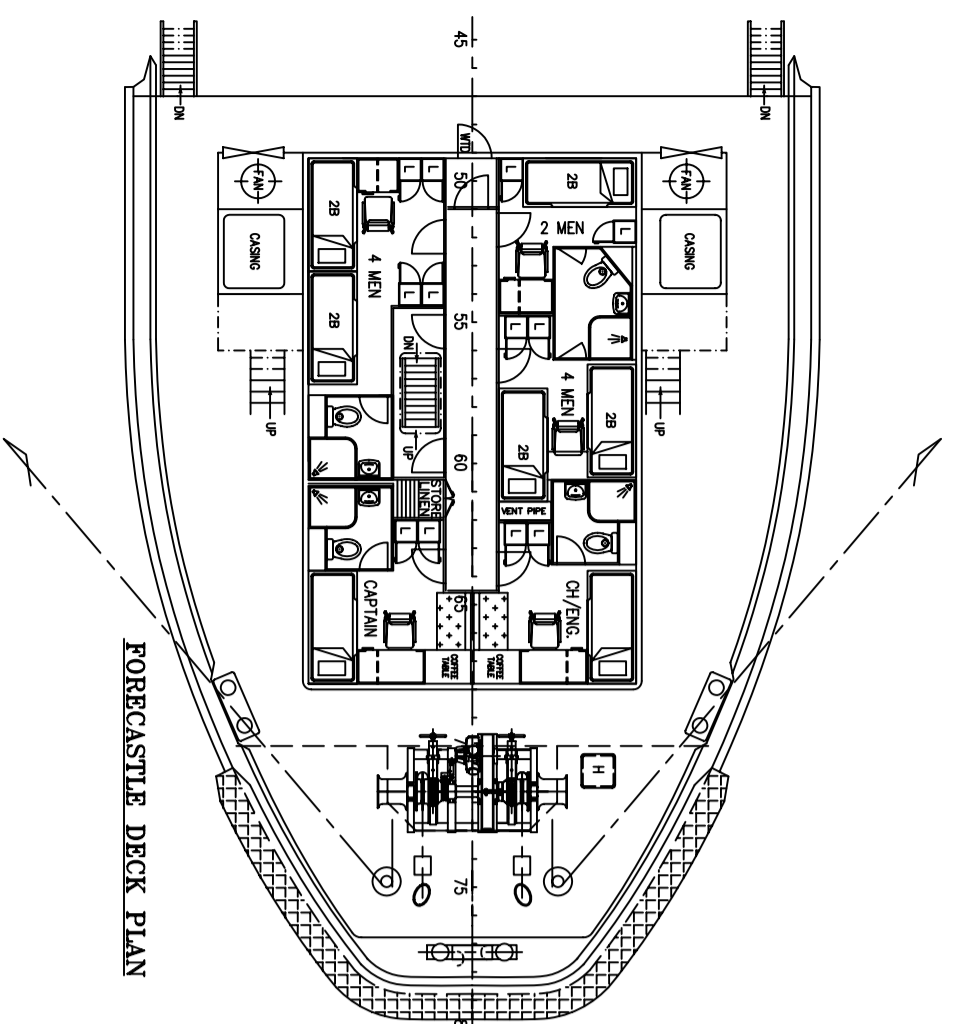


PRINCIPAL DIMENSIONS

LENGTH OVERALL	40.00 M
LENGTH MOULDED	39.50 M
LENGTH WATERLINE	37.80 M
LENGTH B.P.	34.90 M
BREADTH MOULDED	11.80 M
DEPTH MOULDED	4.60 M
DESIGN DRAFT MOULDED	3.80 M
COMPLEMENT	22 MEN
FUEL OIL	305.0 TONNES
FRESH WATER	170.0 TONNES
TOTAL POWER	2x1200 BHP
TRIAL SPEED	11.0 KNOTS
BOLLARD PULL (AHEAD)	28.0 TONNES



THIS DOCUMENT AND THE INFORMATION IT CONTAINS IS COPYRIGHT AND REMAINS THE PROPERTY OF KHIAM CHUAN MARINE PTE LTD. IT IS NOT TO BE COPIED OR REPRODUCED IN ANY MANNER WITHOUT THE WRITTEN CONSENT OF KHIAM CHUAN MARINE PTE LTD.

PROJECT		40M UTILITY/SUPPORT VESSEL	
TITLE		GENERAL ARRANGEMENT	
CLASSIFICATION	HULL NO.	1S167	
DRAWN	CHECKED	SCALE	DRAWING NUMBER
		1:100	KCM/0402(D)-G1
CONSULTANT		DETAILS OF MODIFICATION	
BY		DATE	
<p>KHIAM CHUAN MARINE PTE LTD 15, HILLVIEW TERRACE, SINGAPORE 669226 TEL: 6753383 (6 LINES) FAX: 6753788 EMAIL: khiamchuan@kcm.com.sg</p>			