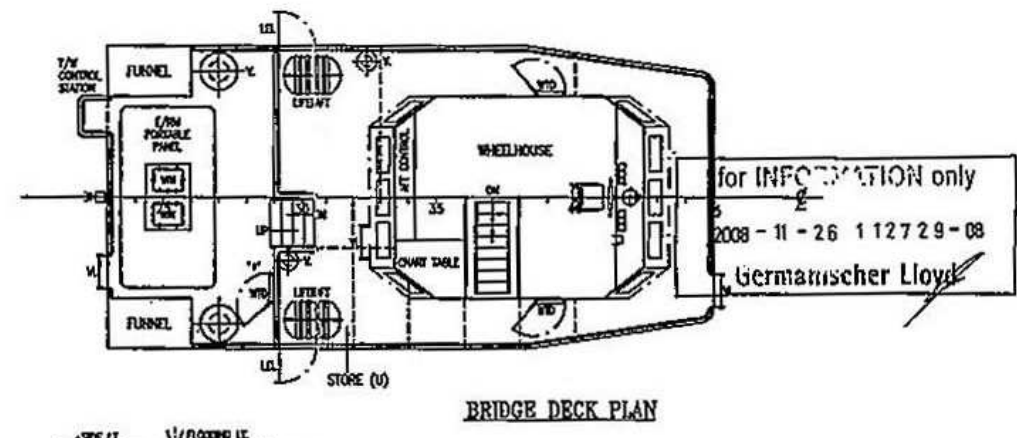
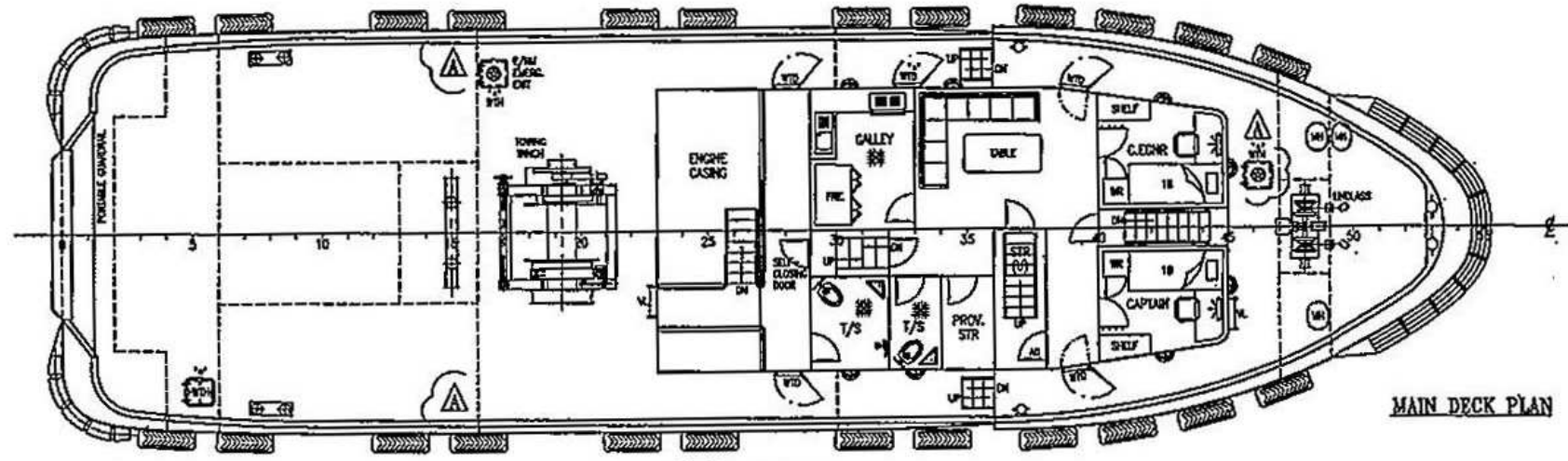
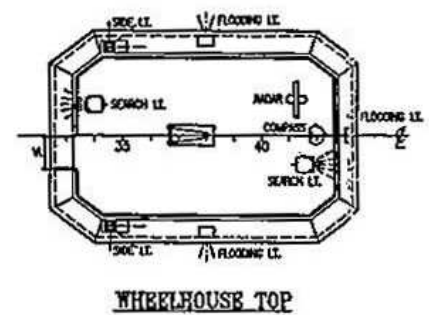
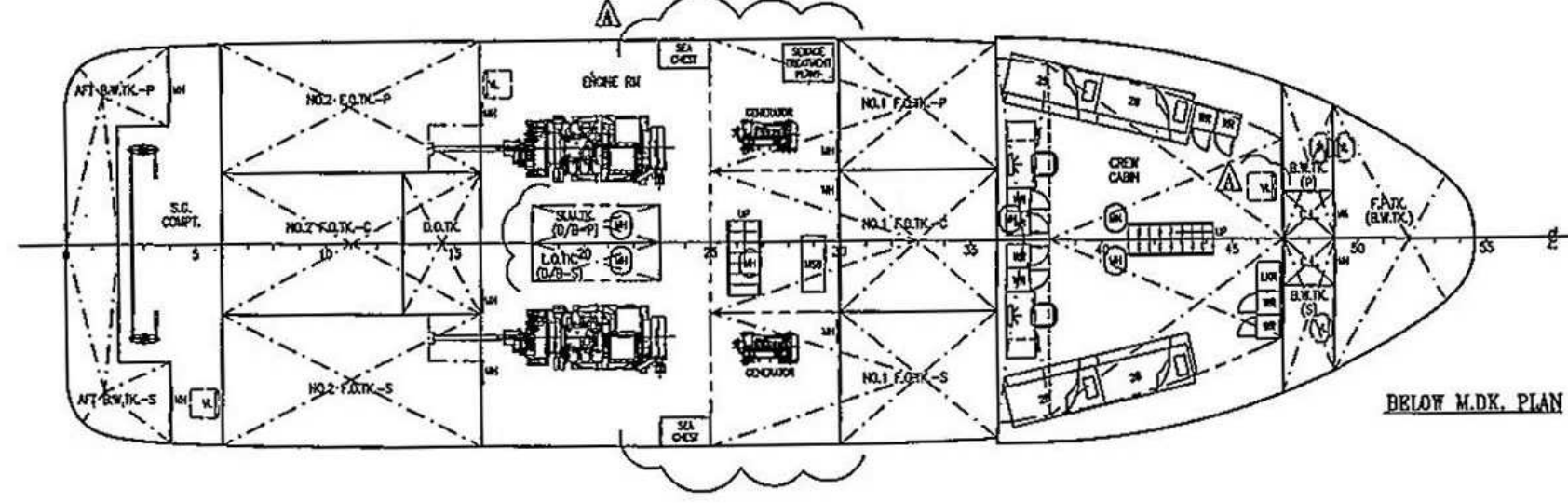


**PRINCIPAL PARTICULARS :-**

L.O.A.	30.000M (98.425FT)
L.W.L.	29.215M (95.850FT)
L.B.P.	27.733M (90.988FT)
BREADTH MLD	8.600M (28.215FT)
DEPTH MLD	4.115M (13.500FT)
DESIGNED DRAFT	3.500M (11.483FT)
(SUBJECT TO FREEBOARD ASSIGNMENT)	
DESIGN SPEED	ABT 11 KNOTS
COMPLEMENT	10 MEN
F.O. CAPACITY	203 TONNES (APPROX.)
F.W. CAPACITY	50 TONNES (APPROX.)
MAIN ENGINE	CUMMINS KTA38-M2 1200HP@1800RPM x 2 UNITS
GEAR BOX	MGS321DC, RATIO 5.96:1
GENERATOR	80KW x 2 UNITS
NAVIGATION AREA	UNRESTRICTED NAVIGATION
PORT OF REGISTRY	FUNAFUTI
FLAG	TUVALU



for INFORMATION only  
2008-11-26 112729-08  
Germanischer Lloyd



- NOTES:-**
- (A) Δ BULKHEAD BETWEEN F.O.T.K. AND ACCOMMODATION SPACE TO BE COVERED BY OIL-IMPREGNATED MATERIALS.
  - (B) ▲ TOP OF F.O.T.K. TO BE COATED WITH INCOMBUSTIBLE COATING OF 35MM AND OVER BY THICKNESS.
  - (C) \* TO BE KEPT CLOSED AT THE SEA AND A PERMANENT NOTICE TO THIS EFFECT SHALL BE POSTED ON EITHER SIDE OF THE DOOR.
  - (D) SIDE SCUTTLES ARE TO BE FITTED WITH EFFICIENT, HINGED ISIDE DEADWATER.
- WTD = WEATHER TIGHT DOOR  
WTH = WEATHER TIGHT HATCH

06.04.08	AMENDED AS PER BUILDER'S REQUEST	A	WONG
DATE	MODIFICATION	REV	BY
SHP			
30M TWIN SCREW TUG			
TITLE			
GENERAL ARRANGEMENT			
OWNER			
BUILDER			
YO NO.			
CLASS	CL	K30132, X30133	
DRAWN	CHECKED	APPROVED	SCALE
07.01.08			1:75