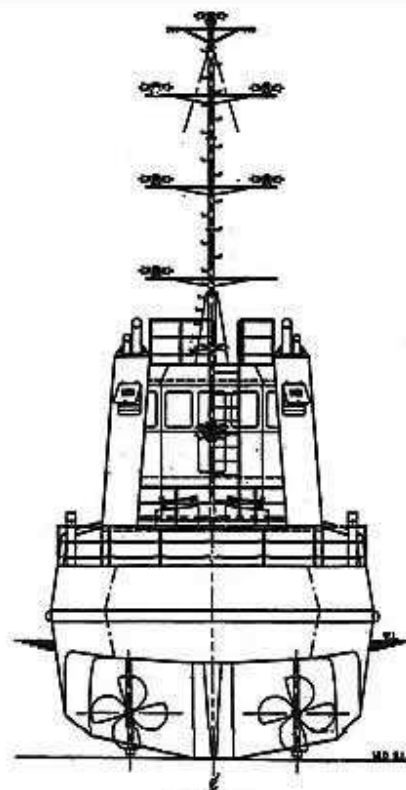


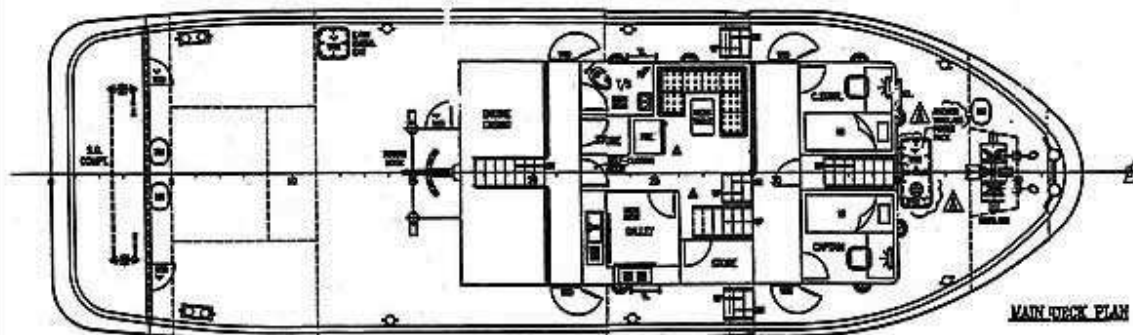
SIDE PROFILE



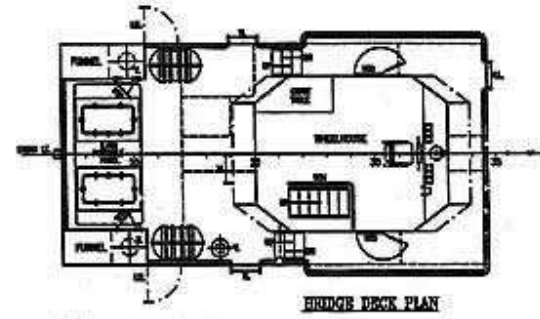
STEM VIEW

PRINCIPAL PARTICULARS

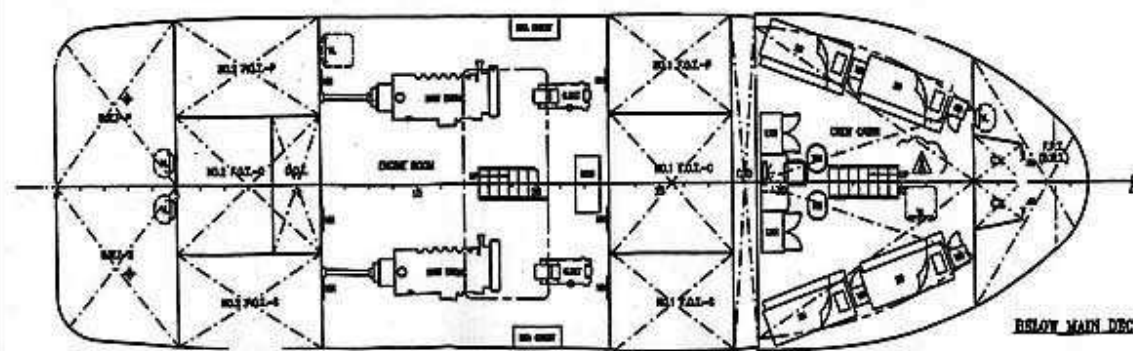
L.O.A.	23.500M (77.00FT)
L.B.P.	21.322M (69.95FT)
BREADTH MOULDED	7.515M (24.00FT)
DEPTH MOULDED	3.200M (10.50FT)
DESIGN DRAFT	2.700M (8.86FT)
	(SUBJECT TO FREEBOARD ASSIGNMENT)
COMPLEMENT	10 MEN
DESIGN SPEED	10 KNOTS
F.O. CAPACITY	80 TONS (APPROX.)
F.B. CAPACITY	28 TONS (APPROX.)
MAIN ENGINE	CUMMINS KTA19-A3
	800HP/1800RPM x 2 UNITS
GEAR BOX	MANAGER, RATIO 0.048:1
GENERATOR	23KW x 2 UNITS
NAVIGATION AREA	UNRESTRICTED
PORT OF REGISTRY	KOTA KINABALU
FLAG	MALAYSIA



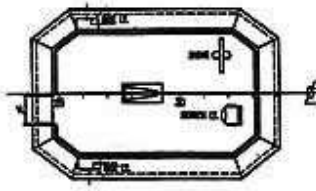
MAIN DECK PLAN



BRIDGE DECK PLAN



BELOW MAIN DECK PLAN



WHEELHOUSE TOP

DESIGNED BY	APPROVED BY	DATE	SCALE	DRAWING NO.
DATE	REVISION	BY	BY	BY
23M TUG BOAT				
GENERAL ARRANGEMENT				
OWNER	SUNDAK SEPARATE & SINDA SIBI SDN BHD			
DESIGNER	SUNDAK SEPARATE & SINDA SIBI SDN BHD			
CHECKED	APPROVED	SCALE	DRAWING NO.	
STANLEY	STANLEY	1:60		