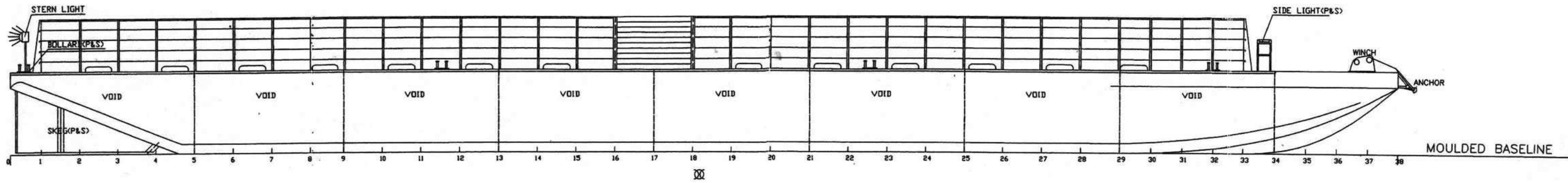
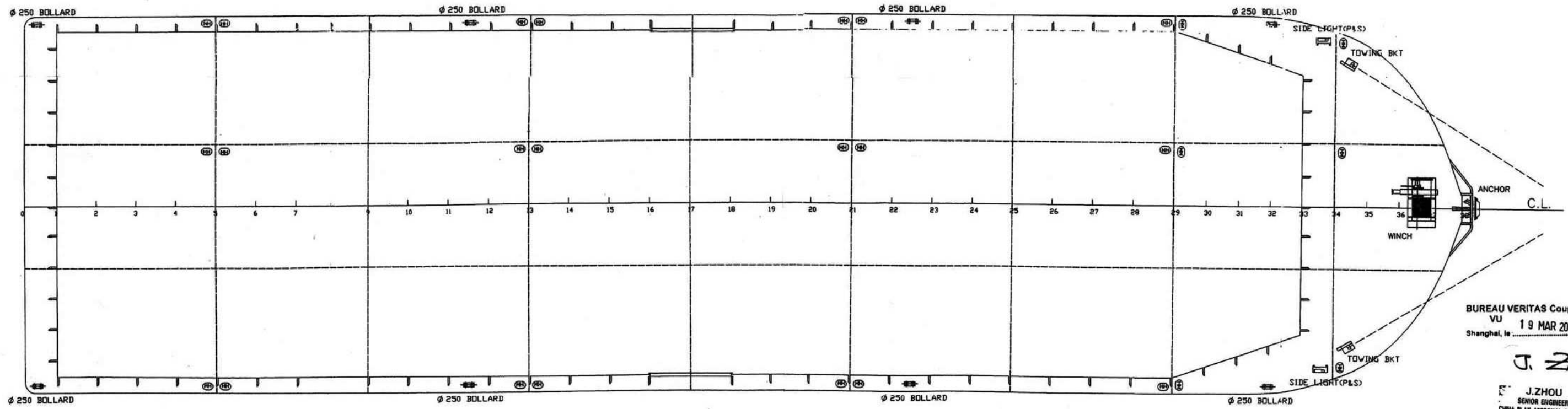


PROFILE



MAIN DECK



BUREAU VERITAS Coupe.....
 VU 19 MAR 2007
 Shanghai, la
J. Zhou
 J. ZHOU
 SENIOR ENGINEER
 CHINA PLAN APPROVAL OFFICE

PERMISSIBLE DECK LONDING 5 TONNES/SQ.M. UDL
 ALL MANHOLES ARE 600X400 FLUSH TYPE
 ALL BOLLARDS ARE ϕ 250MM TWIN POST TYPE

PRINCIPAL PARTICULARS
 LENGTH O.A. 82.3M
 BREADTH MLD. 21.5M
 DEPTH MLD. 4.9M

THIS DRAWING AND THE INFORMATION CONTAINED
 HEREIN ARE PROPERTY OF COASTAL OFFSHORE
 (LABUAN) PTE LTD. THEY MUST NOT BE USED OR
 REPRODUCED IN WHOLE OR IN PART WITHOUT
 PERMISSION IN WRITING.

PROJECT: 270'X70'X16'DECK CARGO BARGE	
TITLE: GENERAL ARRANGEMENT	
Drawn:	Date: 02/1/8
Checked:	Scale: 1:120
Auditing:	Dwg. No.: