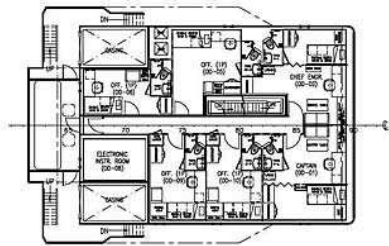
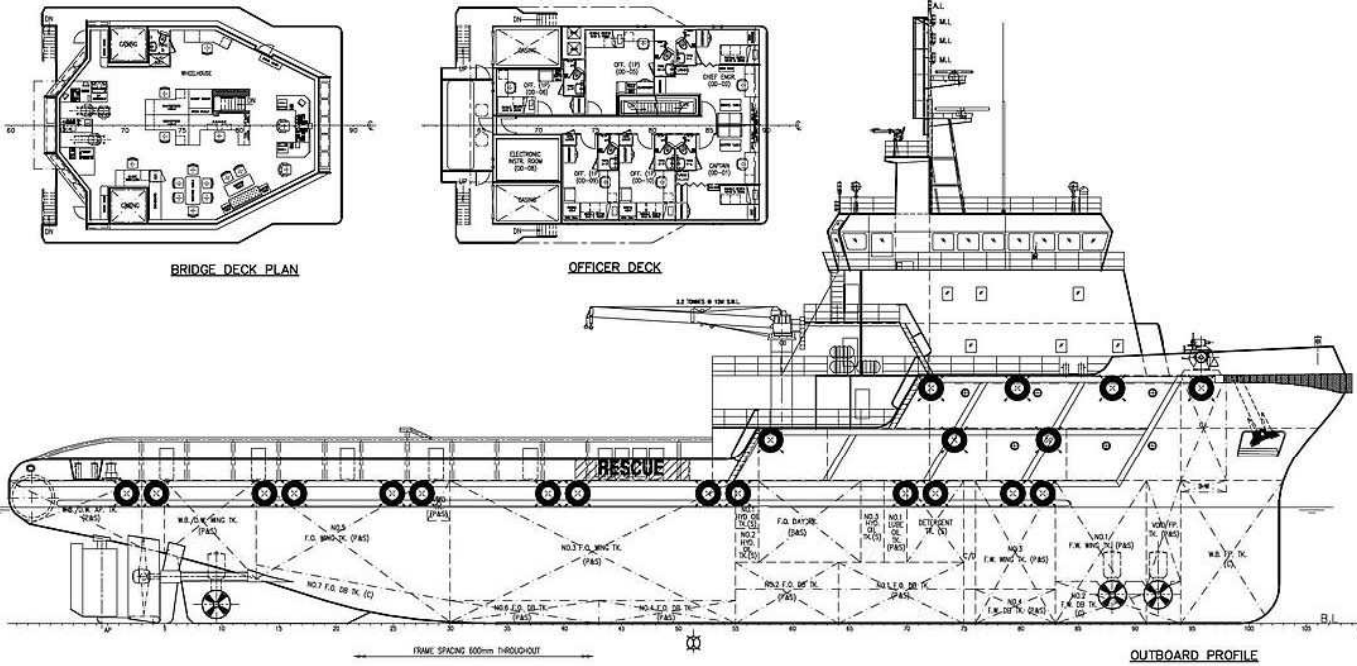


BRIDGE DECK PLAN



OFFICER DECK

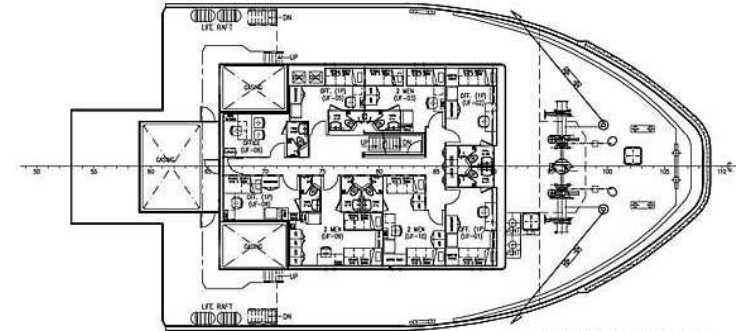


OUTBOARD PROFILE

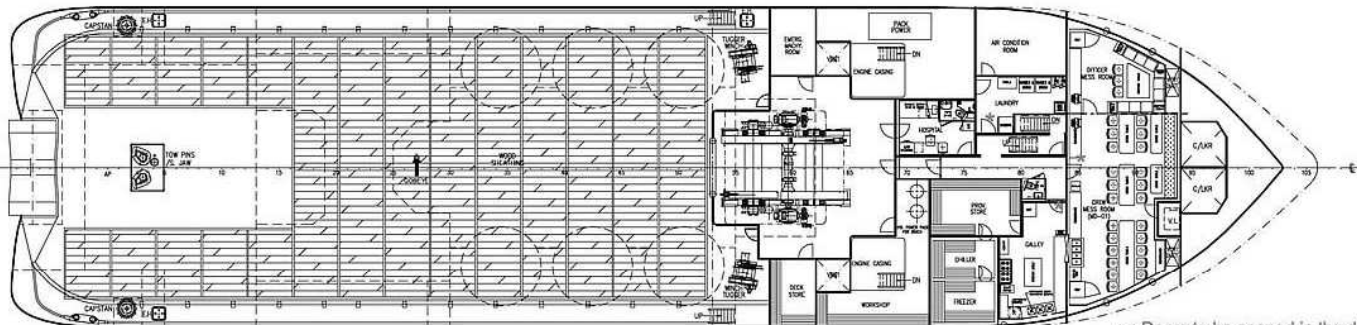
PRINCIPAL DIMENSIONS

LENGTH (O.A.)	70.000 M
LENGTH (W.L.)	66.460 M
LENGTH (B.P.)	61.800 M
BEAM (MLD.)	16.800 M
DEPTH (MLD.)	7.500 M
DESIGN DRAFT	6.100 M
TOTAL DWT AT 6.10M	2000 TONS
FUEL OIL	1250 M ³
FRESH WATER	360 M ³
DRILL WATER / W.B.	335 M ³
MUD	490 M ³
BASE OIL	105 M ³
CLEAR DECK AREA	500 M ²
DECK CARGO (DECK LOADING = 7.5T/M ²)	800 TONS
DRY BULK TANKS (4x2000 FT ³ = 8000 FT ³)	226 M ³
MAIN PROPULSION ENGINE	2 X 4000 KW
SPEED (TRIALS)	14.0 KNOTS
BOLLARD PULL	120 TONS
COMPLEMENT	40 MEN

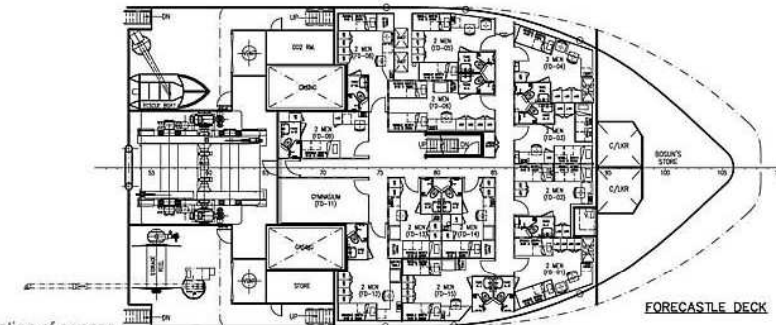
CLASS & NOTATION : ABS * A1 @ "OFFSHORE SUPPORT VESSEL,
FIRE FIGHTING VESSEL CLASS 1" + AMS + DPS-2



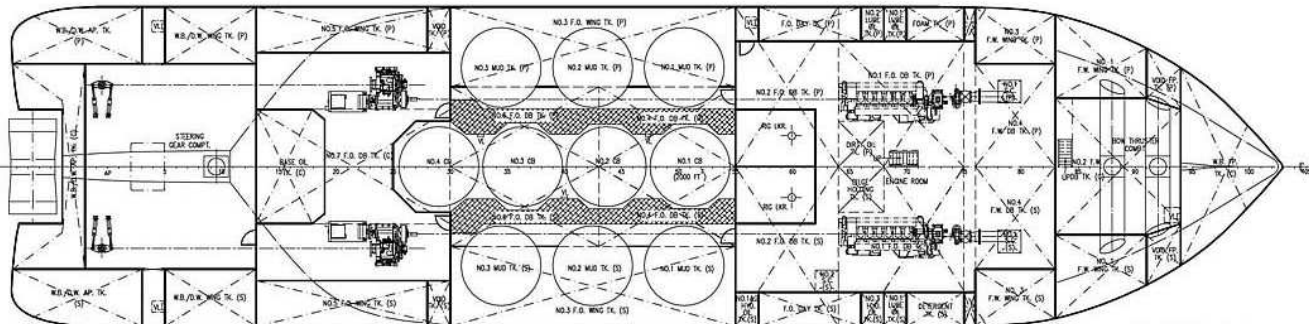
UPPER FORECASTLE DECK



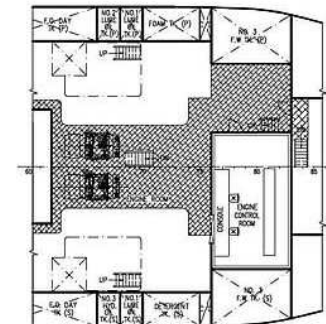
* : Doors to be opened in the direction of escape
MAIN DECK PLAN



FORECASTLE DECK



BELOW DECK PLAN



TWEEN DECK PLAN

DETAILS OF MODIFICATION				BY	DATE
OWNER	COASTAL OFFSHORE (LABUAN) PTE LTD				
CONSULTANT					
PROJECT	70m ANCHOR HANDLING SUPPLY VESSEL				
TITLE	GENERAL ARRANGEMENT				
CLASSIFICATION	HULL NO.				
DRAWN	CHECKED	SCALE	DRAWING NUMBER	REV.	
4-10-05		1:150			